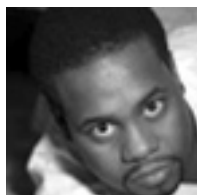


## Our Artists



**Janinah Burnett** The Sunday Times of London wrote that her Pamina in Mozart's Magic Flute was "heart-rendingly touching." Janinah attended Spelman College and the Eastman School of Music. She has sung roles in Verdi's *La Traviata*, *Porgy and Bess*, *Carmen*, and *Gianni Schicchi*. This young soprano has sung solo performances with the Dallas Symphony, the DiCapo Opera, and the Bard Festival. She has toured Austria, Sweden and Japan. In Baz Luhrman's adaptation of Puccini's *La Boheme* she received tremendous acclaim with a record 82 consecutive sold-out shows. She has also performed with Ray Charles and Dr. Billy Taylor. Future venues will include the Augusta Opera, the Baltimore Opera, the Connecticut Opera Association, and Skylight Opera Theater.



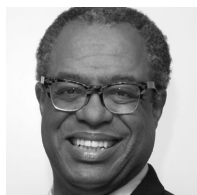
Baritone **Kenneth Overton** is a native of Philadelphia. He studied at the North Carolina School of the Arts and the Hartt School of Music. In 2003 he made his Broadway debut in Baz Luhrman's critically acclaimed production of *La Boheme*. He has performed many leading roles with Connecticut Opera's productions of *Die Zauberflöte*, *La Boheme*, *Don Giovanni*, *Carmen*, *Porgy & Bess*, and *Turandot*. He has sung with many other regional Opera and concert organizations. Kenneth debuted at Carnegie Hall in Jackson Berkey's *Come Follow Me*. In 1998 he made his European Debut at the Bregenz Festival production of *Porgy & Bess* and toured in the U.K. with the same opera. Kenneth is also a winner of the Leontyne Price Vocal Competition and the Liederkranz Foundation Competition.



**Roxanne Rowedder** has performed with the New Jersey State Opera, the New York Oratorio Society, and the Wagner Society. She has received the London/Flagstad Award, as well as awards from the Albanese/Puccini Foundation, Opera Index, and others. Roles include *Cavalleria Rusticana*, *Ariadne auf Naxos*, and *Un Ballo in Maschera*. She studied with Simon Estes, George Shirley, Jane Klaviter, and the Bel Canto Institute. Reviewing her performance in Bernstein's *Jeremiah* Laurence MacDonald wrote "The 'Lament' movement featured strong singing by ... Roxanne Rowedder, whose powerful voice emotionally conveyed the Hebrew text about the sinfulness of Jerusalem."



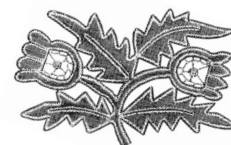
**John Bernard** trained at the Boston Conservatory and in young artist programs at the Glimmerglass Opera, the Sarasota Opera and others. He has sung as a concert soloist with the New York Choral Society, New Haven Symphony, Utah Symphony, and the Central Synagogue in New York City, and with conductors Anton Coppola, George Manahan, Gerald Steichen and Keith Lockhart. He has performed in roles with DiCapo Opera Theatre, Utah Opera, Glimmerglass Opera, Sarasota Opera, El Paso Opera, and the Boston Lyric Opera. He is proud to have recently become a member of the Metropolitan Opera Chorus.



**Dwight Owsley**, born in Texas, has lived in New York City for more than twenty-five years. An enthusiastic performer since infancy, he has appeared on stage in operas, musicals, and in night clubs internationally. Currently he presides over the concierge desk at a prestigious Manhattan hotel advising the rich and powerful on how to allocate their opera ticket budget. He is also an exceptionally entertaining raconteur knowledgeable on many subjects, especially music. Just ask him.

Opera Exposures presents

# In Recital



*Roxanne Rowedder*  
mezzo-soprano

*Kenneth Overton*  
baritone

*John Bernard*  
tenor

*Janinah Burnett*  
soprano

*Dwight Owsley*  
narrator

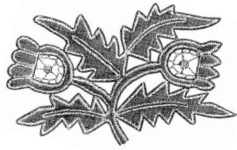
*Sharon Bjorndal*  
piano

Sunday, June 25, 2006

Saint Mark's Church in the Bowery  
East Tenth Street at Second Avenue  
New York City

# Opera Exposures

is a not for profit tax exempt organization dedicated to presenting both seasoned professional musicians and fresh young artists in accessible venues. It has become increasingly difficult to hear operatically trained artists at affordable prices. These are singers that you will want to hear again and come to know, and our purpose is to present them to a wide and diverse public.



Opera Exposures gratefully acknowledges the financial support provided for this event by the following individuals:

Stephen H. Milarsky  
Dr. Robert J. Campbell  
Chev. Cesare L. Santeramo  
Irwin Kishner  
Jack Jackson  
Two anonymous donors

Special thanks to  
Jonathan Kelly, our Musical Director  
Miss Jeannine Otis, Musical Director, St. Mark's Church  
Carl Sylvestre, for business direction and a very orderly mind  
Deborah Jackson, for all her help and smiles  
Ivy Hasandras and the Youth Choir of  
Brighton Heights Reformed Church

Catering generously provided by Paola Bottero of  
**Paola's Restaurant**, 245 East 84th Street and  
**50 Carmine**, 50 Carmine Street, between Bleeker and Bedford

Flowers by **L'Olivier Florist**, 19 East 76th Street and  
**L'Olivier Downtown**, 213 West 14th Street

Contact us at [operaexposures@aol.com](mailto:operaexposures@aol.com)  
Please visit Opera Exposures website at [www.operaexposures.org](http://www.operaexposures.org)

Opera Exposures' director is Edna Greenwich  
Edited by Dwight Owsley  
Designed by Buzzy Kolwyck / Dandy Gelatine

# Program

Great Day from <i>American Negro Songs</i> by J.W. Work, 1940	company
Una furtiva lagrima from the opera <i>L'Elisir d'Amore</i> by Gaetano Donizetti, 1832	John Bernard
Judgment Scene from the opera <i>Aida</i> by Giuseppe Verdi, 1871	Roxanne Rowedder
Madamina! (Catalogue Aria) from the opera <i>Don Giovanni</i> by W.A. Mozart, 1787	Kenneth Overton
Je dis ... (Micaëla's Aria) from the opera <i>Carmen</i> by Georges Bizet, 1875	Janinah Burnett
Duet from the opera <i>The Pearl Fishers</i> by Georges Bizet, 1863	John Bernard and Kenneth Overton
Dein ist mein ganzes Herz from <i>Das Land des Lächelns</i> by Franz Lehar, 1929	John Bernard
When I Am Laid in Earth from the opera <i>Dido and Aeneas</i> by Henry Purcell, 1689	Roxanne Rowedder
Without a Song from <i>Great Day</i> by Vincent Youmans, 1929	Kenneth Overton
Your Daddy's Son from <i>Ragtime</i> by Stephen Flaherty and Lynn Ahrens, 1995	Janinah Burnett
Joshua Fit de Battle ob Jerico traditional spiritual arranged for Kenneth Overton by Leo Edwards	Kenneth Overton
My Soul's Been Anchored in the Lord traditional spiritual arranged by Florence Price	Janinah Burnett
Ride on, King Jesus traditional spiritual	John Bernard
Climb Ev'ry Mountain from the <i>Sound of Music</i> by Rogers and Hammerstein, 1959	Roxanne Rowedder
Make Our Garden Grow from <i>Candide</i> by Leonard Bernstein, 1956	company